



# AN INTERNATIONAL GROUP AT YOUR SERVICE



Eurotech\* is a leading technology Group with a global presence that spans Europe, the USA and Asia.

Our efforts are focused on providing much more than great hardware: we have built an ecosystem of interoperable components, software and services that enable consistent and quick development of end user projects.

We recognize and target the most critical success factors, such as:

- time to market
- ruggedness
- compliance to industry standards and certifications
- reliability and long term availability
- local and global support service

## Application specific boards

Eurotech has designed products that are specific for demanding applications such as those found in the Industrial, Transportation, Defense and Medical segments.

Since each application must address specific requirements, Eurotech has developed boards that can be used to build products that withstand the harshest environments: vibrations, temperature range, humidity, dust are not a problem for our select board series.

If you are interested in an in-depth discussion about our select boards, call our nearest office or write to [missioncritical@eurotech.com](mailto:missioncritical@eurotech.com)

We have dedicated teams with in-depth experience in each market segment and we can support your design decisions with products that are tailored for your needs and regulations.

## Boards: Eurotech advantage

High quality and timely delivery are not sufficient to be successful in an increasingly competitive market; Eurotech gives you more:

- Software
  - Low level: firmware, OS, BIOS
  - High level: libraries, hardware abstraction middleware
- Quality
  - Rugged hardware
  - Guaranteed longevity of supply for extended product life
- Support
  - Global and local technical support
  - Development kits with extensive features and tools

## Customization services

Eurotech's strategy is based on products that comply to industry standards; however some projects require an extra ingredient.

Our personalization and configuration service allows a perfect match of your needs, implementing your unique design.

Examples of services:

- BIOS/Firmware personalization
- Software preinstallation
- Hardware options
- Choice of connectors
- Conformal coating
- Special testing/qualification

Please contact our nearest office or send an e-mail to: [MyBoard@eurotech.com](mailto:MyBoard@eurotech.com)

Our team will answer your questions and provide you with the full range of personalization options.



\* Established in 1992, Eurotech is a public company listed on the Italian Stock Exchange in MTAX-Star segment (Ticker: ETH.MI).



# BOARD QUICK FINDER

EUROTECH BOARD PORTFOLIO SPANS OVER A WIDE RANGE OF INDUSTRY STANDARDS AND FORM FACTORS.

THE BOARD QUICK FINDER PROVIDES A CROSS REFERENCE OF THE MAIN FEATURES OF EACH FAMILY OF PRODUCTS.

MORE DETAILED INFORMATION ON THE PRODUCTS AND ON THEIR ASSOCIATED ACCESSORIES AND SOFTWARE CAN BE OBTAINED FROM [WWW.EUROTECH.COM](http://WWW.EUROTECH.COM) OR BY CONTACTING YOUR LOCAL OFFICE OR REPRESENTATIVE.

CONFORMITY TO MARKET SPECIFIC REGULATIONS AND CERTIFICATIONS (TRANSPORTATION, DEFENSE, ETC) IS AVAILABLE ONUPON REQUEST.

<b>PRODUCT FOCUS: THE NEW EUROTECH Intel® Atom™ BOARDS AND MODULES</b>		<b>4</b>
<b>BACKPLANE PLUGGABLE BOARDS</b>	<b>VME</b> - CPU - Digital I/O - Analog I/O - Communication and Control	<b>6</b> <b>6</b> <b>6</b> <b>6</b>
	<b>CompactPCI</b> - CPU - Communication - I/O	<b>7</b> <b>7</b> <b>7</b>
	<b>CompactPCI Express</b> - CPU - Communication	<b>7</b> <b>7</b>
<b>MEZZANINE MODULES</b>	<b>PMC</b> - Memory Expansion - Digital I/O - Analog I/O - Communication and Control	<b>8</b> <b>8</b> <b>8</b> <b>8</b>
<b>STACKABLE MODULES</b>	<b>PC/104</b> - CPU - Peripheral Expansion - I/O - Power Supplies	<b>8</b> <b>9</b> <b>9</b> <b>9</b>
<b>SINGLE BOARD COMPUTERS</b>	<b>EBX / EPIC</b>	<b>10</b>
	<b>COM Express</b>	<b>10</b>
<b>LOW POWER CPU MODULES</b>	<b>SO-DIMM</b>	<b>10</b>
	<b>Other form factors</b>	<b>11</b>

# CATALYST MODULE WITH Intel® Atom™ PROCESSOR

Long term availability

Extended temp. range and rugged designs

Personalization services

Custom module carriers

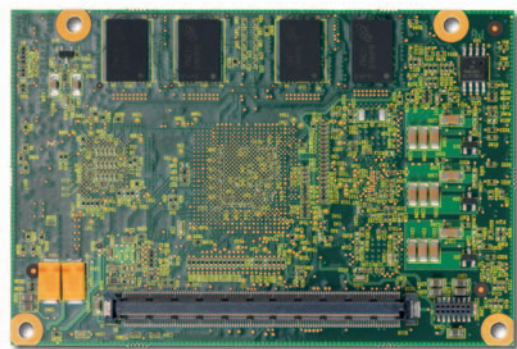
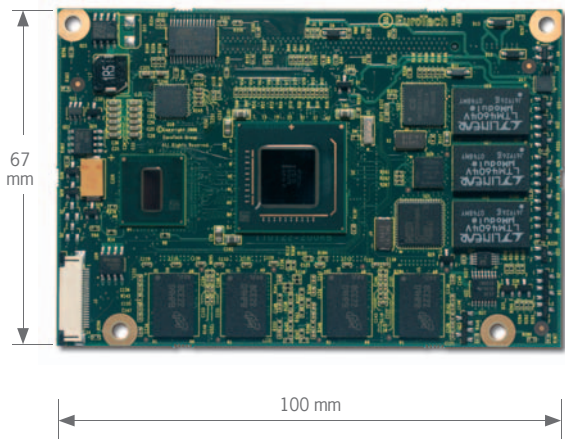
Industry record: less than 5W (3W typ.)

Microcontroller based Power Management

Very Low EM emissions

Global and Local Technical Support

Optional on-board modules: ZigBee, Bluetooth, GPS



**On Carrier Expandability**

- Up to 8 USB 2.0
- Serial Ports (RS-232, RS-485, Optically Isolated)
- Touch Screen Interface
- Parallel Port
- IrDA Interface
- Digital I/Os
- Analog I/Os
- Can BUS
- 10/100/1000 LAN
- PCI-Express for High Speed I/O
- Mini-PCIe for Wireless Applications
- Microphone and Speaker
- Audio

**System**

CPU Atom™ up to 1.6 GHz  
533 MHz FSB

System Controller Hub  
US15W

Power Typical 3W  
Max 5W

**Multimedia**

Dual independent display UXGA, XGA, SXGA, HD

Codecs H.264, MPEG-4/2/I, WM9, DivX

Audio Intel® Hight Definition Audio

**Memory Storage**

RAM 533Mhz DDR-2 up to 1GB

Up to Three SD/MMC Cards

Up to Two PATA Disk Drives

**Operating Systems**

Windows® XP, XPe, CE

Linux

Specific RTOS or other OS support contact us

## Catalyst



### Features

- This small form factor module exports the full set of interfaces via our dedicated connector
- Ideal for volume applications with moderate to high degree of customization
- Design your carriers or have us do it for you.
- Change the connectors or add functions to the carrier and tailor the design to your needs
- Available in Standard Temperature Range (0°C to + 70°C) and Extended (-40°C to +85°C)

## PROTEUS



### Features

- Stand alone version of the Proteus COM Express board
- Features on board connectors, perfect for stand-alone applications
- Boxed version available for even faster time to market
- Flexible power Supply: 8.5V to 24V DC (+12V nominal)

## ISIS IO4



### Features

- PC/104 carrier for the CATALYST module.
- Upgrade your existing designs or create new products using this familiar form factor
- Stacking connector provides full access to all interfaces
- Available in Standard Temperature Range (0°C to + 70°C) and Extended (-40°C to +85°C)
- Additional on board features: 20-channel GPS, TPS, solid state drive, VGA



## PROTEUS COM Express



### Features

- COM Express module that fits the requirements of projects with tight time to market or requiring high level of integration
- Extremely complete in feature set and options, such as on board 20-channel GPS, TPS, ZigBee, Bluetooth, solid state drive, Gigabit Ethernet, SATA, PCIe mini card, touch screen interface

## Intel® Atom™ Development Kits



### Features

- Jumpstart your Atom project: with our Development Kits you can cut dramatically the development time
- The Development Kits include your chosen processor card module, an interface board that exposes all functions of the module and an LCD with touchscreen
- The interface board makes it easy to integrate external devices during development
- Available with Microsoft Windows XPe, Embedded CE 6.0, Linux

## Catalyst EPIC



### Features

- EPIC carrier board for the CATALYST module: targeted for applications such as industrial, medical, and transportation where low power and fanless operation are critical, the Catalyst EC consists of an EPIC-compliant carrier board with Eurotech's Catalyst Module mounted to it: the Catalyst EC excels in performance, graphics, and communication while maintaining low cost
- Supports a range of operating system choices including Windows CE, XP, XPe, Vista, Linux and targeted real time operating systems (RTOS)



VME CPU	Advme7511	Advme7509	Advme7513
Processor	PowerPC MC7448	PowerPC 750FX, 600MHz	AMCC PowerPC 440EPx
Main Memory	Up to 1GB on board	Up to 512MB SDRAM, ECC	Up to 1GB on board with ECC
Boot ROM	512KB	512KB	512KB
Backup SRAM	512KB	512KB	512KB
CompactFlash	Y	Y	
EEPROM	256B	256B	2kbit
Ethernet	2x GbE	2x FE	2x GbE
Serial	1x RS-232	4x RS-232	2x RS232
PMC Expansion	2x 64-bit PMC or PCIX	1x 64-bit PMC	1x 32-bit PMC or PCI
System Controller	Tundra Ts108	GT64260	
VME Controller	Tundra Ts148	NARUTO II	NARUTO
VME Bus Compliance	VME64x + 2eSST	Rev C.3	Rev.C.3
Bus Width	Address: 16/24/32/64; Data 08/16/32/64	Address: 16/24/32; Data: 08/16/32	Address: 16/32; Data: 8/16/32
Bus Modes	Master/Slave	Master/Slave	Master/Slave
Power Requirements	5Vdc $\pm$ 5%; 20W typ. 30W max	5Vdc $\pm$ 5%; 11.5W typ. 17.3W max	5Vdc $\pm$ 5%; 6W typ. 9W max
Board Size	6U	6U	6U
Board Width	Single slot	Single slot	Single slot
VxWorks	Y	Y	Y
Linux	Y		



VME Digital I/O	Advme1420a	VME Communication and Control	Advme1537	Advme1543
Input Configuration	32 channels	Ports	Isolated DeviceNET interface	Isolated GPIB controller
Input Voltage	12 to 24V	Processor	CAN interface, RS-232 serial port	SH7045F (SH-2)
Input Current	6.7mA at 24Vdc	RAM		2MB
Output Configuration	32 channels	VME Bus Compliance	Rev C.3	
Output Voltage	50Vdc	VME Bus Modes	Master/Slave	Address: 24; Data: 08/16
Output Current	200mA switching	VME Bus Width	Address: 16/24; Data:08/16	Slave
I/O Connector	2x 40-pin flat cable	Power Requirements	5Vdc $\pm$ 5%; 1.8W typ. 2.7W max	5Vdc $\pm$ 5%; 2.9W typ. 4.4W max
Isolation	1500Vac between channels and system	Board Size	6U	262x172x20 mm
VME Bus Compliance	Rev C.3	Board Width	Single slot	
VME Bus Modes	Master	VxWorks	Y	Y
VME Bus Width	Address: 16; Data: 08/16			
Power Requirements	5Vdc $\pm$ 5%; 3W typ. 4.5W max			
Board Size	Double height			
Board Width	Single slot			
VxWorks	Y			



VME Analog I/O	Advme2607	Advme2701	Advme2702	Advme1608A
Analog Input	64 single ended 32 differential	8 channels	16 channels	16 channels
Analog Output				8 channels
Resolution	12 bit	12 bit	12 bit	12 bit
Input Range	+/-10V, 0 to 10V, 0 to 5V Option: 4 to 20mA			0 to 10V, +/-10V
Output Range		0 to 5V, 0 to 10V, +/-5V, +/-10V or 0 to 20mA	0 to 5V, 0 to 10V, +/-10V	0 to 10V, +/-10V, +/-5V
Output Current		0 to 10mA	5mA	5mA
Conversion Time	30 $\mu$ s, multiplexed inputs	1 ms per channel	30 $\mu$ s, multiplexed inputs	36 $\mu$ s, multiplexed inputs
Input Connector	2x 34-pin flat cable			34-pin flat cable
Output Connector		34-pin flat cable	34-pin flat cable	20-pin flat cable
VME Bus Compliance	Rev C.3	Rev C.1	Rev C.3	Rev C.3
VME Bus Modes	Master/Slave	Master/Slave	Slave	Slave
VME Bus Width	Address: 16; Data: 08/16	Address: 16; Data: 08/16	Address: 16; Data: 08/16	Address: 16; Data: 08/16
Isolation	1500Vac between inputs and system, no channel-to-channel isolation	Transformer coupled I/O to system, 1500Vac isolation voltage	1500Vac between outputs and system, no channel-to-channel isolation	500Vac between outputs and system, no channel-to-channel isolation
Power Requirements	5Vdc $\pm$ 5%; 2.3W typ. 3.5W max	5Vdc $\pm$ 5%; 7.5W typ. 11.3W max	5Vdc $\pm$ 5%; 4.5W typ. 6.8W max	5Vdc $\pm$ 5%; 3.5W typ. 5.3W max
Board Size	6U	6U	6U	6U
Board Width	Single slot	Single slot	Single slot	Single slot
VxWorks	Y	Y	Y	Y



cPCI CPU	A3pci8024	A3pci7512	A6pci7508	A6pci8019	A6pci7504A
Processor	EP80579 1.066GHz	PowerPC G4 MPC7447A 1GHz	PowerPC G4 MPC7447A up to 1GHz	Pentium M 1.8 GHz	MPC7410 up to 500MHz
Main Memory	Up to 2GB DDR2 SDRAM SO-RDIMM	Up to 1 GB DDR2, SODIMM	Up to 1 GB DDR2 on board	Up to 2GB, SODIMM	Up to 512MB SDRAM
Boot ROM	2MB	512KB	512KB		512KB
SRAM		32KB	512KB		512KB
Serial EEPROM	2Kbit	256B	256B	2Kbit	256B
Front Panel I/O	1x GbE, 1x USB2.0	2x TIA/EIA-232E, 2x GbE	1x TIA/EIA-232E, 2x GbE	1x TIA/EIA-232E, 2x GbE, Analog VGA, 2x USB2.0	2x RS-232, 2x FE
Onboard Storage	miniSD card	miniSD slot	CF slot	CF+ slot, UltraATA/100 HDD interface	CF slot, type I and type II card
Other Functions		Watchdog	Watchdog, RTC, temperature monitor		RTC, Watchdog timer DMA controller, 8 timer/counters
PMC Expansion	PCI 32bit		2x 64-bit PMC slot	PCI-X, 64-bit	PCI 32/64bit
Rear Panel I/O	2x SATA 1.0a, 4x USB 2.0, 1 PCI Express x4			1x TIA/EIA-232E, 2x GbE, PS/2 keyboard and mouse, 2x USB 2.0, 2x SATA 1.0	
System Controller		TundraTsi108	TundraTsi108	82855GME	Marvell GT-64260
CPCI Bus Compliance	PICMG 2.0 Rev 3.0	PICMG 2.0 Rev 3.0	PICMG 2.0 Rev 3.0	PICMG 2.0 Rev 3.0, 2.1 Rev 2.0	PICMG 2.0 Rev 2.1
CPCI Bus Controller		TundraTsi108	PLX PCI6254	6300ESB	Marvell GT-64260
CPCI Bus Modes	System/ Peripheral Slot, Universal mode	System slot	Transparent bridge in system slot, non-transparent bridge in peripheral slot	Transparent bridge in system slot, non-transparent bridge in peripheral slot	Transparent bridge in system slot, non-transparent bridge in peripheral slot
CPCI Bus Width		Data: 32/64	Data: 64	Data: 32	Data: 32/64
Power Requirements	5Vdc ±5%; 22.5W typ. 33.8W max	5Vdc ±5/3%; 11.9W typ. 17.9W max; 3.3Vdc ±5/3%; 2.8W typ. 4.2W max	5Vdc ±5%; 16W typ. 24W max; 3.3Vdc ±5%; 5W typ. 7.5W max	5Vdc ±5%; 24W typ. 36W max; 3.3Vdc ±5%; 13.2W typ. 19.8W max	5Vdc ±5%; 6.5W typ. 9.8W max; 3.3Vdc ±5%; 6.9W typ. 10.4W max
Board Size	3U		6U		6U
Board Width	Single slot	Single slot	Single slot	Single slot	Single slot
Win XP				Y	
Win 2000				Y	
Linux				Y	
VxWorks	Y	Y	Y		Y



cPCI Communication	A3pci1546	A3pci1534
Front Panel I/O	2x FE	CAN / DeviceNet
CPCI Bus Compliance	PICMG 2.0 Rev 3.0	PICMG 2.0 Rev 3.0; 2.1 Rev 1.0
CPCI Bus Modes	Peripheral slot	Master /Slave
CPCI Bus Width	Data: 32/33	32-bit
Power Requirements	5Vdc ±5%; 2.3W typ. 3.5W max	5Vdc ±5%; 2.3W typ. 3.5W max
Board Size	3U	3U
Board Width	Single slot	Single slot
Win NT4.0		Y
VxWorks	Y	Y

cPCI I/O	A3pci1550
No. of channels	4 channels Serial Interface
Communication system	Asynchronous
Signal level	TIA/EIA-232E standard compliant
UART	Two National Semiconductor PC16552DV UARTs, clk=18.432MHz
Baud rate	Up to 115.2kbps
Connector	Half-pitch Dsub 50-pin female connector
Control line	DCD, DSR, CTS, DTR, RTS, RI
Bus	32-bit CompactPCI interface 5Vdc ±5%;
Power Requirements	0.7W typ. 1.1W max
Board Size	3U
Board Width	Single slot
VxWorks	Y



cPCI Express CPU	A6EXP8021
Processor	Core Duo, Core2 Duo L2400/ L7400/T7400
Main Memory	Up to 4GB DDR2 DIMM
Boot ROM	1MB
Serial EEPROM	256B
Front Panel I/O	1280x1024 @ 24bit graphics, 2x SATA, 4x USB 2.0, 2x GbE
Onboard Storage	CF+ slot
System Controller	6300ESB
CPCI Bus Compliance	PICMG EXP.0 Rev 1.0
CPCI Bus Controller	E7520MCH
CPCIE Slot	System slot
CPCI Bus Width	4x PCIe
Power Requirements	12Vdc ±5%; 42W typ. 63W max; 5Vdc ±5%; 0.1W typ. 0.2W max
Board Size	6U
Board Width	Double slot
Win NT	Y
Win XP	Y
Win 2000	Y
Linux	Y

cPCI Express Communication	A3EXP1563
Physical Interface	2x GbE
CPCIE Bus Compliance	PICMG EXP.0 R1.0
CPCIE Slot	Type 1 and 2, Hybrid slot
CPCIE Bus Width	x1 or x4
Power Requirements	5Vdc ±5%; 3.8W typ. 5.7W max
Board Size	3U
Board Width	Single slot
Win NT	Y
Win XP	Y
Win 2000	Y



#### AdRC-EXP1



The AdRC-EXP1 is a sub rack that allows a cPCI Express-compatible CPU boards, peripheral boards and cPCI-compatible peripheral boards to co-reside and be used in combination. The AdRC-EXP1 is designed to store up to three cPCI Express-compatible peripheral boards (Type2) and up to six cPCI-compatible peripheral boards. The A6EXP8021 board must be used as a bridge in mixed cPCI and cPCI Express configuration.



PMC	Adpmc1109	Adpmc1110	Adpmc2704	Adpmc1425	Adpmc2609
Type	Memory	Memory	Digital I/O	Digital I/O	Analog I/O
Power Requirements	5Vdc ±5%; 0.5W typ. 0.8W max	3.3Vdc ±5%; 0.5W typ. 0.8W max	12Vdc ±5%; 0.4W typ. 0.6W max; 5Vdc ±5%; 0.2W typ. 0.3W max; 12Vdc ±5%; -0.4W typ. 0.6W max	5Vdc ±5%; 1.3W typ. 2W max	12Vdc ±5%; 0.1W typ. 0.2W max; 5Vdc ±5%; 0.2W typ. 0.3W max; 12Vdc ±5%; 0.1W typ. 0.2W max
VxWorks			Y	Y	



	Adpmc1548	Adpmc1547	Adpmc1545	Adpmc1556	Adpmc1555
Type	Communication and Control	Communication and Control	Communication and Control	Communication and Control	Communication and Control
Power Requirements	5Vdc ±5%; 0.9W typ. 1.4W max	5Vdc ±5%; 0.7W typ. 1W max	5Vdc ±5%; 1.7W typ. 2.6W max	5Vdc ±5%; 0.5W typ. 0.8W max; 3.3Vdc ±5%; 4W typ. 6W max	3.3Vdc ±5%; 1W typ. 1.5W max
VxWorks	Y	Y	Y	Y	



PC104+ CPU modules	ISIS	CPU-1484	CPU-1482	CPU-1474	CPU-1472	CPU-1464	CPU-1462	CPU-1454
Processor	Atom up to 1.6GHz	Pentium M 1,4GHz, 2MB L2 cache	Pentium M 1,4GHz, 2MB L2 cache	Celeron M 1GHz, 512KB L2 cache	Celeron M 1GHz, 512KB L2 cache	Pentium III 800KHz I2 cache	Pentium III 800KHz I2 cache	Celeron ULV 400MHz, 256KB L2 cache
Expansion	PC/104, PC/104+, PCI Express Mini Card Socket, 2x PCIe	PC104/PC104+	PC104/PC104+	PC104/PC104+	PC104/PC104+	PC104/PC104+	PC104/PC104+	PC104/PC104+
Memory	Up to 1 GB	512MB On board	512MB On board	512MB On board	512MB On board	256MB On board	256MB On board	256MB On board
Video Interface	VGA, LVDS, SDVO	VGA, LVDS	VGA, LVDS	VGA, LVDS	VGA, LVDS	VGA, LVDS	VGA, LVDS	VGA, LVDS
Ide	ATA 100	ATA 100	ATA 100	ATA 100	ATA 100	UltraATA	UltraATA	UltraATA
RS232	1	1	1	1	1	1	1	1
RS232/422/485	1	1	1	1	1	1	1	1
Ethernet	1x FE	1x FE + 1x GbE	1x FE	1x FE + 1x GbE	1x FE	1x FE + 1x GbE	1x FE	1x FE + 1x GbE
USB	8x 2.0	4x 2.0	8x 2.0	4x 2.0	8x 2.0	4x 1.1	4x 1.1 + 4x 2.0	4x 1.1
Disk on module support								Y
Ext Temp Range Option	Y	Y	Y	Y	Y	Y	Y	Y
Linux	Y							
Win CE 5.0		Y	Y	Y	Y	Y	Y	Y
Win XPe	Y	Y	Y	Y	Y	Y	Y	Y
Power Requirements	5Vdc ±5%	5Vdc; 14.5W typ. 18.5 max	5Vdc; 14.5W typ. 18.5 max	5Vdc; 9.5W typ. 13.5 max	5Vdc; 9.5W typ. 13.5 max	5Vdc ±5%; 13W typ.	5Vdc ±5%; 13W typ.	5Vdc ±5%; 8W typ.
Other OS	Win CE 6.0	Y		Y	Y	Y		Y
Java			Y	Y			Y	Y



	CPU-1452	CPU-1433	CPU-1233	CPU-1421	TITAN	VIPER	VULCAN
Processor	Celeron ULV 400MHz, 256KB L2 cache	Geode GX466 333MHz	Geode GX466 333MHz	Elan SC520 133MHz	XScale PXA270 520MHz	XScale PXA255 400MHz	XScale IXP425 533MHz
Expansion	PC104/PC104+	PC104/PC104+	PC104	PC104/PC104+	PC104	PC104	PC104
Memory	256MB On board	128MB On board	128MB On board	64MB On board	Up to 128MB On board	Up to 64MB On board	Up to 64MB On board
Video Interface	VGA, LVDS	TFT, VGA	TFT, VGA		TFT/STN, LVDS	TFT/STN, LVDS opt	
Ide	UltraATA	Y	Y	Y			
RS232	1	1	1	2	4	4	3
RS422/485					1	1	1
RS232/422/485	1	1	1	2	0	0	0
Ethernet	1x FE	1x FE	1x FE	2x FE	1x FE	1x FE	2x FE
USB	4x 1.1 + 4x 2.0	4x 2.0	4x 2.0		2x 1.1	2x 1.1	4x 2.0
Disk on module support	Y	Y	Y	Y			
Ext Temp Range Option	Y	Y	Y	Y	Y	Y	Y
Linux	Y	Y	Y	Y	Y	Y	Y
Win CE 5.0	Y	Y	Y	Y	Y	Y	
Win XPe	Y						
Power Requirements	5Vdc ±5%; 8W typ.	5Vdc ±5%; <6W typ.	5Vdc ±5%; <6W typ.	5Vdc ±5%; 4.6W typ.	5Vdc ±5%; 1.5W typ. 4.2W max	5Vdc ±5%; 2W typ. 3.7W max	5Vdc ±5%; 3.5W typ. 4.5W max



PC/104 Peripheral Expansion	CTR-1474	CTR-1475	INT-1462	INT-1410	CTR-1462	PRV-1059	COM-1240	COM-1274
Type	Compressing video capture	Compressing video capture	Video capture	Audio switch matrix	Removable expansion	Ethernet switch	MVB communication	Asynchronous serial communication
Form Factor	PC104+	PC104+	PC104+	PC104+	PC104+	PC104	PC104	PC104
Linux	Y	Y	Y	Y	Y		Y	Y
Win CE 5.0		Y		Y	Y		Y	Y
Win XPe		Y			Y			Y
Power Requirements	5Vdc ±5%; 2W typ. 3W max	5Vdc ±5%; 7W typ. 10W max		5Vdc ±5%; 5W max		5Vdc; 1.5W typ.	5Vdc ±5%; 3.5W	
Extended Temperature Range Option	Y	Y	Y	Y	Y	Y	Y	Y



	AIM104-COM4	AIM104-CAN	AIM104-SER4	AIM104-COM8	COM-1289	COM1250/1251	COM-1480	COM-1452
Type	Asynchronous serial communication	CAN communication	Synchronous serial communication	Asynchronous serial communication	Wireless communication and GPS positioning	MIL-STD-1553 bus communication	Wireless 3G communication and GPS positioning	Multi-port Ethernet communication
Form Factor	PC104 (8-bit)	PC104 (8-bit)	PC104 (8-bit)	PC104 (8-bit)	PC104	PC104	PC104+	PC104+
Software	C Library	C Library	C Library	C Library				
Linux	Y	Y		Y	Y	Y	Y	Y
Win CE 5.0	Y				Y		Y	Y
Win XPe	Y			Y	Y	Y	Y	Y
Power Requirements	5Vdc ±5%; 1.1W typ.	5Vdc ±5%; 0.9W typ.	+5Vdc, +12Vdc, -12Vdc ±5%; 2.55W max	5Vdc ±5%; 1.1W typ.			5Vdc; 3W typ. 4.5W max	5Vdc ±5%; 3W typ. 4.5W max
Other OS						Win CE.net		
Extended Temperature Range Option					Y	Y	Y	Y



PC/104 I/O	DAQ-1278	AIM104-IN16	AIM104-IO32	AIM104-RELAY8/IN8
Type	Isolated digital I/O	Isolated digital input	General purpose digital I/O	Relay/Digital Power Input
Form Factor	PC104	PC104	PC104	PC104
Linux	Y	Y	Y	Y
Win CE		Y	Y	Y
Win XPe	Y	Y	Y	Y
Power Requirements	5Vdc ±5%; 1.8W typ.	5Vdc ±5%; 0.5W max	5Vdc ±5%; 1.25W max	5Vdc ±5%; 1.25W typ.
Extended Temperature Range Option	Y		Y	



	AIM104-OUT16	AIM104-ADC16/IN8	AIM104-MULTI-IO
Type	Digital power output	Isolated analogue and digital I/O	Isolated analogue and digital I/O
Form Factor	PC104	PC104	PC104
Software		C Library	C Library
Linux	Y	Y	Y
Win CE	Y	Y	Y
Win XPe	Y	Y	Y
Power Requirements	5Vdc ±5%; 0.625W max	5Vdc ±5%; 2.05W max	5Vdc ±5%; 2.4W max



PC/104 Power Supplies	ACS-5125	ACS-5151	ACS-5161	ACS-5175
Form Factor	PC104+	PC104	PC104	PC104
Power Output	25W	50W	60W (100W peak)	75W
Input Range	15.5-40Vdc	8-40Vdc	18-36Vdc	9-45Vdc or 16-80Vdc
Output	+5V	+5V, +3.3V, +12V	+5V, +12V	+5V, +12V
Heat Dissipation Scheme	Structural, conduction cooling	Convection cooling	Structural, conduction cooling	Structural, conduction cooling
Extended Temperature Range Option	Y	Y	Y	Y



EBX / EPIC	GEMINI	APOLLO	Catalyst EC	ZEUS
Processor	Core 2 Duo/ Core Duo/ Core Solo/ Celeron M 4xx @ 533/667 MHz	Pentium M / Celeron M up to 1.8GHz	Atom up to 1.6GHz	PXA270 520MHz
Form Factor	EBX, 5.25"	EBX, 5.25"	EPIC, 4.5x6.5 inch, 115x165 mm	EPIC
Expansion	1 PCI slot + 1 mini-PCI slot	PCI slot	mini-PCIe wireless slot (for 802.11, Bluetooth, and GPS)	PC104
Memory	Up to 3GB	Up to 1GB	Up to 1GB	Up to 256MB on board
Video Interfaces	Analog VGA, DVI, LVDS and SD/HDTV output	Dual channel with analog VGA and LVDS, 2nd analog VGVA or DVI via adapter boardsDVI	2x independent display outputs - LVDS Video and Analog RGB 2x GbE	TFT, STN or LVDS flat panel
Ethernet	4x GbE	1x FE + 1x GbE	2	2x FE
RS232	2	3		2
RS422/485			2	1
RS232/422/485	1	1	4x USB 2.0	1
USB	6x 2.0	6x 2.0	PATA	2x 1.1
IDE	UDMA33	ATA	SD/MMC	
Solid State Memory				SD/SDIO/MMC
SATA	2			
I <sup>2</sup> C				Y
CF	Y	Y		Y
FDD	Y	Y	Y (PS/2)	
Keyboard & Mouse	Y	Y	Y	
RTC	Y	Y		Y
Audio Controller	AC97 CODEC	AC97 CODEC	16	AC97 CODEC
GPIO	8			
Accessories				Ports for Cellular/Wireless modem, GPS port or IEEE802.15.4/ZigBee, Development kit
Power Requirements	8 to 24Vdc; 60W max	ATXPower Supply ±5%; 40.8W typ 52.45W max	+8Vdc to +16Vdc; 7W typ. 11W max	5Vdc ±5%; 2W typ
OS Supported	Linux, Win XPe	Linux, Win XPe	Linux, Win XP, XPe, CE, Vista	Linux, Win CE.net
Extended Temperature Range Option			Y	Y



COM Express	PROTEUS COM Express	Adbc8025	Adbc8022
Processor	Atom processor up to 1.6GHz	EP80579 1.066GHz	Core Duo L2400 1,66 GHz, Core2 Duo L7400/T7400
Form Factor	COM Express Pin-out Type 1	COM Express Pin-out Type 3	PICMG COM.0R1.0 Specification
Memory	Up to 1GB DDR2 SDRAM	Up to 2GB DDR2 SO-RDIMM with ECC	Up to 4 GB DDR2 DIMM
Boot ROM		SPI Flash 2MB	
EEPROM		I2C EEPROM 2Kbits	
Video Interface	2x LVDS		VGA
SATA	2	2	2
USB	6x 2.0	5x 2.0	4X 2.0
Ethernet	1x GbE	3x GbE	1x GbE
PCI Express		Pne x4 Lane or one x1 Lane	
PCI Bus		32bit/33MHz	
LPC Bus		LPC 1.1 Interface	
Other features	20-channels GPS receiver, Bluetooth or ZigBee	2x UART, 2x CAN	IDE UltraATA/100
Power Requirements	12Vdc	5/ 12Vdc	12Vdc ±5%
OS Supported	Win XP, XPe, CE 6.0, Linux	Linux, Win XP Emb	Win NT, 2000, XP, Linux



SO-DIMM	TurboXb Module	QUANTUM
Processor	PXA270 @ 520 MHz	PXA270 312 or 520 MHz
Form Factor	2.66x2.37 inches (67.6x60.3 mm) SO-DIMM	67.6 x 50 mm SO-DIMM
Memory	Up to 128 MB DRAM	64 MB SDRAM soldered on board; up to 256 KB SRAM; up to 64 MB Flash on board
Video Interface	LCD	TFT/STN
Serial Port	3	5x TTL serial port
Ethernet	1x FE	
USB	1x 1.1 + 1x 2.0	1x 1.1
I <sup>2</sup> C port		Y
Solid State Memory	SD/MMC	MMC/SD/SDIO
Power Requirements	+5Vdc	Maximum 3.3V/0.7A
Other Features	CF Type I and II, AC97 Codec, SPI	CF, AC97 Codec, 2x SSP port
Extended Temp Range Option	Y	Y
OS Supported	Linux, Win CE.net	Linux, Win CE.net

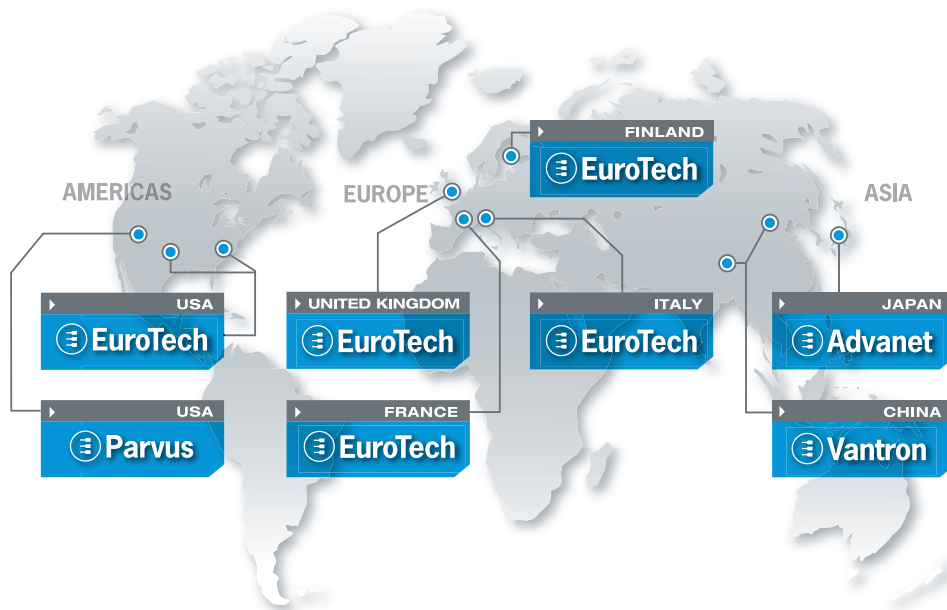


Other Form Factor	Catalyst Module	TurboIXP Module	GCM	BitsyXb	GCX	AGX
Processor	Atom up to 1.6 GHz	IXP465 @ 667 MHz	PXA320 @ 806 MHz	PXA270 @ 520 MHz	PXA255 @ 400 MHz	PXA255 @ 400 MHz
Form Factor	2.8x3.9 inches (67x100 mm)	4.03x2.67 inches (102.4x67.8 mm)	4x6 inch (102x152 mm)	3x5 inches (76x127 mm)	4x6 inch (102x152 mm)	4x7 inches (102x178 mm)
Memory	Up to 1 GB DDR-2 DRAMM UXGA, XGA, SXGA, HD; Codecs for H.264, MPEG04/2/1, Windows Media-9, Div-X; Dual independent display outputs	Up to 128 MB DDR SDRAM	Up to 256 MB DDR SDRAM	Up to 128 MB DDR SDRAM	Up to 256 MB DRAM	Up to 256 MB SDRAM
Video Interface		LDC, Analog RGB (DB-15), 24-bit LVDS, RGB565	LCD, support for RGB565	LCD, 4 or 5-wire touchscreen	LCD, 4 or 5-wire touchscreen	LCD, 4 or 5-wire touchscreen
Serial Port		1	3	3	3	7
Ethernet		2x FE	1x FE		1x FE	1x FE
USB	8x 2.0	1x 1.1 + 1x 2.0	2x 1.1 + 1x 2.0	USB master hub	1x 1.1	2x 1.1
GPIO		11				10x GPIO
CAN			1x CAN 2.0b port		CAN 2.0b support	1x CAN bus
I <sup>2</sup> C port		1	1	1		
Solid State Memory	3x SD/MMC slots					
Other Interfaces	2x PATA drives; Adapter board expandability including serial ports, PCI-Express, digital and analog I/O, mini-PCIe, parallel port	1x 32-bit PCI, 1x SSP port	Analog inputs, digital GPIO, UART, 6x8 keypad support	10x digital I/O; 9x configurable I/O; 1x SPI port	Up to 18x digital IO, 4x analog inputs, PS/2 interface; PCMCIA; I2C controller; NSSP (Network Synchronous Serial Port)	4x analog input, 16x digital GPIO configurable for digital I/O and/or up to 8x8 matrix keypad
Other Features	Power management; Intel HD Audio; Operating System Support for Microsoft Windows XP, XPe, Embedded CE, Vista, Linux, and other RTOS	IEEE1588, 1x 32-bit expansion interface	Stereo audio codec, 1x Camera Sensor Interface port option, 2x software-controlled LED status indicators, RTC	16-bit stereo audio codec; PS2 keyboard support; External interrupt input support	Stereo audio codec; 3x software controlled LED status indicators; 4x software readable configuration switches; RTC w/ backup battery +3.3Vdc and +5Vdc; 2.1W typ. 3W max	Stereo audio codec, System backup, RTC, Graphics Accelerator
Power Requirements	+3.3Vdc and +5Vdc ± 5%; 3W typ. 5W max	+3.3Vdc	+5Vdc and +12Vdc	+3.3Vdc and +5Vdc; 2.1W max	+3.3Vdc and +5Vdc; 2.1W typ. 3W max	+3.3Vdc and +5Vdc
OS Supported	Linux, Win XP, XPe, CE 6.0, Vista	Linux, Win CE.net	Linux, Win CE.net	Linux, Win CE.net	Linux, Win CE.net	Linux, Win CE.net
Extended Temperature Range Option	Y	Y	Y	Y	Y	Y



	VGX	Bitsy G5	Sphere II	Adbc8023	Adbc8020	PROTEUS
Processor	PXA255 @ 400 MHz	i.MX31 @ 532 MHz	EP9315 @ 200 MHz	Celeron M up to 1.3GHz	Geode LX800 500 MHz	Atom up to 1.6 GHz
Form Factor	4x7 inches (102x178 mm)	3x5 inches (76x127 mm)	4.0x4.6 inches (102x117 mm)	95x125 mm (COM Express)	100x145 mm	6.1x4.33 inches (155x110 mm)
Memory	Up to 256 MB SDRAM	Up to 256 MB DDR SDRAM	Up to 128 MB DRAM	Up to 1GB DDR	Up to 1GB DDR	Up to 1GB DDR2 SDRAM
Video Interface	LCD; support for Analog RGB, 24-bit LVDS, RGB565, 4 or 5-wire touchscreen	LCD, 4 or 5-wire touchscreen	LVDS, LCD option, 4 or 5-wire interface	LVDS, DVI	Analog VGA	2x LVDS 24-bit, 4, 5 and 8-wire touchscreen
Serial Port	7	3	3	2	1	1
Ethernet	1x FE	1x FE	1x FE		2x FE	1x GbE
USB	2x 1.1	1x 1.1 + 1x 2.0	3x 2.0	4x 2.0	2x 2.0	3x 2.0
GPIO	10x GPIO		20x additional GPIO			
CAN	2x CAN 2.0b buses					
I <sup>2</sup> C port	1	1	1			
Solid State Memory						1x MicroSD
Other Interfaces	16x digital I/O, 4x A/D inputs, 8x8m matrix keypad support; 1x I2C port; 1x SPI/SSP port 3x software-controlled	4x analog inputs, 9x digital I/O or 5 analog inputs w/ 4 digital I/O	16x digital I/O or 8x8 matrix keypad, 1x SSP/SPI port	2x SATA, 2x IDE, AC97, 2x PCI bus, LPC, Smbus, 4x GPI, 5x GPO		1x SATA, 2x Mini PCIe Socket, 1x SIM Socket, 1x External SIM Interface
Other Features	LED status indicators; 4x software readable configuration switches; RTC	Vector floating point; Stereo audio codec	Stereo audio codec, RTC with battery backup, IDE interface	RAS function, Watchdog	TIA/EIA-232E Standard, asynchronous, equipped with 2-port header connector, USB 2.0 header, CF	Optional 20 channels GPS receiver, HD Audio & 2W amplifier
Power Requirements	+5Vdc; 3W max	+5Vdc	+3.3Vdc and +5Vdc; 0.16W and 1.4W typ. 1.4W max	5V dc +/- 5%	5V dc +/- 5%	8.5 to +25V DC (+12V nominal), 2-2.3W
OS Supported	Linux, Win CE.net	Linux, Win CE	Linux, Win CE.net	Linux, Win NT, 2000, XP	Linux, Win NT, 2000, XP	Linux, Win XP, XPe, CE 6.0
Extended Temperature Range Option	Y	Y	Y			Y

# EUROTECH WORLDWIDE PRESENCE



## EUROTECH HEADQUARTERS

### EUROTECH

Via Fratelli Solari, 3/a  
33020 Amaro (UD) - ITALY  
tel. +39.0433 485 411  
fax +39.0433 485 499  
e-mail: sales@eurotech.com  
[www.eurotech.com](http://www.eurotech.com)

## AMERICAS

### North America

**EUROTECH USA**  
Corporate Office  
10260 Old Columbia Road  
Columbia, Maryland 21046 - USA  
toll free +1 800.541.2003  
tel. +1 301.490.4007  
fax +1 301.490.4582

*Satellite Office*  
7500 West 161st Street  
Overland Park, Kansas 66085  
USA  
toll free +1 888.941.2224  
tel. +1 913.549.1000  
fax +1 913.549.1001

e-mail: sales-us@eurotech.com  
[www.eurotech-inc.com](http://www.eurotech-inc.com)

**PARVUS CORPORATION**  
3222 So. Washington St.  
Salt Lake City, Utah 84115 - USA  
tel. +1.800.483.3152  
fax +1.801.483.1523  
e-mail: sales@parvus.com  
[www.parvus.com](http://www.parvus.com)

## EUROPE

### Central & Southern Europe

**EUROTECH Italy**  
Via Fratelli Solari, 3/a  
33020 Amaro (UD) - ITALY  
tel. +39.0433 485 411  
fax +39.0433 485 499  
e-mail: sales-it@eurotech.com  
[www.eurotech.com](http://www.eurotech.com)

### Western Europe

**EUROTECH UK**  
3 Clifton Court, Cambridge,  
CB1 7BN - UK  
tel. +44 (0) 1223 403410  
fax +44 (0) 1223 410457  
e-mail: sales-uk@eurotech.com  
[www.eurotech.com](http://www.eurotech.com)

**EUROTECH France**  
Parc Club du Moulin à Vent  
33, av. Docteur Georges Levy  
Batiment 33  
69200 Venissieux - Lyon  
FRANCE  
tel. +33.04.72.89.00.90  
fax +33.04.78.70.08.24  
e-mail: sales-fr@eurotech.com  
[www.eurotech.com](http://www.eurotech.com)

### Northern & Eastern Europe

**EUROTECH Finland**  
Kantelettarenkuja 1, PL 73  
00420 Helsinki - FINLAND  
tel. +358 9 477 888 0  
fax +358 9 477 888 99  
e-mail: sales-fi@eurotech.com  
[www.eurotech.com](http://www.eurotech.com)

## ASIA

### ADVANET Japan

616-4, Tanaka,  
Okayama 700-0951 - JAPAN  
tel. +81-86-245-2861  
fax +81-86-245-2860  
e-mail: sales@advanet.co.jp  
[www.advanet.co.jp](http://www.advanet.co.jp)

### VANTRON

*Corporate Office*  
4th Floor, No. 16 GaoPeng  
Avenue  
Hi-Tech Zone, Chengdu  
610041 Sichuan - CHINA  
tel. +86 28.85.12.39.30  
fax +86 28.85.12.39.35

*Satellite Office*  
ZhongGuanCun East Road Nr. 66  
Tri-Tower B, Suite 2207  
100083 Beijing - CHINA  
tel. +86 10.62.67.09.04  
fax +86 10.62.67.09.54

e-mail: sales@vantrontechn.com.cn  
[www.vantrontechn.com.cn](http://www.vantrontechn.com.cn)



[www.eurotech.com](http://www.eurotech.com)