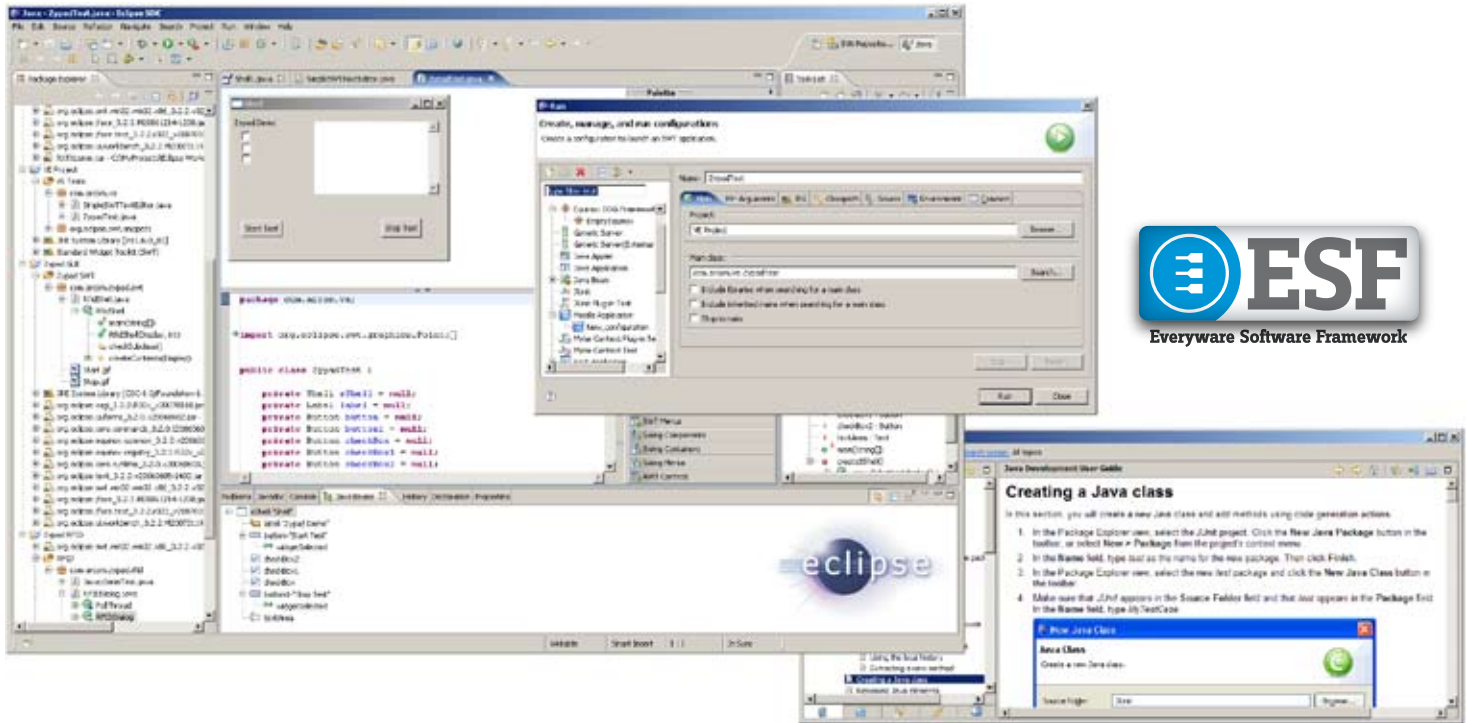


Everyware™ Software Framework (ESF)



BENEFITS

- Quick development and faster time to market with Equinox OSGi Application Framework
- Portable, secure, network-centric application development using JavaME Virtual Machine
- Broad industry support and flexibility using Wind River 3.0 Linux
- Flexible development environment with hardware virtualization via extensive Java Plug-ins (bundles) that can be seamlessly ported across platforms
- Easy integration into industry standards such as Bluetooth, GPS, ZigBee, Ethernet and much more
- Available on several Eurotech hardware platforms

Develop robust, flexible applications with minimal development and get to market faster with the Everyware™ Software Framework. Eurotech's Everyware™ Software Framework (ESF) is a newly distributed development platform for Eurotech's range of embedded computers and systems that enables programmers to quickly develop applications using the Equinox IDE and Java ME virtual machine.

ESF separates the hardware from the foundation logic and the foundation logic from the business logic. This separation simplifies application development by providing common foundation layers and allowing OEMs to focus on application-specific code development. Device drivers are approached as services, implemented using simple APIs instead of complex code. The simple API removes the need to modify low-level OS code or configuration files by creating application code and adding process and vertical knowledge to the development process. Because ESF is based on standardized open software backed by large industry companies, OEMs can easily port existing applications from third parties to their own devices.

ESF middleware includes tooling that lets OEMs modify, reconfigure and maintain their application over time, to evolve as market demands change. Adaptability and flexibility to meet market requirements gives OEMs a huge competitive advantage over static, fixed functionality software applications. Manage risk through ESF, by selecting the framework that lets you adjust quickly, easily, and inexpensively.



Everyware Software Framework (ESF)

Specifications*

CERTIFIED HARDWARE PLATFORM

Helios™ Platform
 Catalyst Module and Catalyst Module XL
 Catalyst EC and Catalyst EC XL
 DuraCOR 1200/1400
 ISIS
 PROTEUS

OPERATING SYSTEM

Wind River Linux 3.0
 Win CE and WES (contact factory for availability)

JAVA VIRTUAL MACHINE

Java Micro Edition (J2ME) J9v2.4 with support of CDC1.1/Foundation1.1

OSGI APPLICATION FRAMEWORK

Equinox open source implementation from Eclipse Foundation

JAVA BUNDLES

Foundation bundles providing core functionality and hardware virtualization to begin application development:

- Device Configuration
- System logger
- Platform management (Watchdog, CPU temp, Sleep modes, etc)
- Management of all available network devices offered through platform

Vertical market bundles (contact factory for availability)

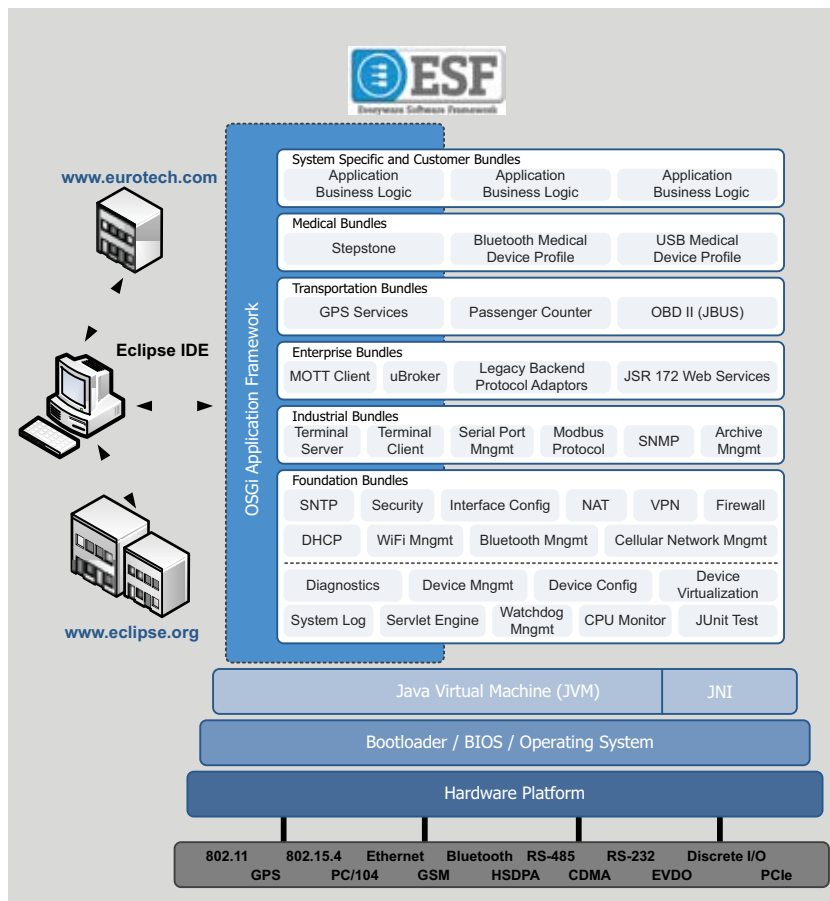
- Industrial (SCADA)
- Enterprise (IBM Enterprise Connect)
- Transportation
- Medical (with association with Continua Alliance)

*Specifications and features subject to change without notice
 See our website for latest updates and more information
www.eurotech-inc.com

About Us

Eurotech delivers embedded computer systems for high capability and low power applications, networking and wearable computing solutions, and application framework middleware for multimedia, industrial, transportation, medical, and wireless applications. Eurotech platforms allow OEM and enterprise customers to focus on their core revenue-generating products and services and get to market quickly.

Everyware™ Software Framework is a trademark of Eurotech Group. Other trademarks are property of their respective holders.



CMM4517 Sept2009